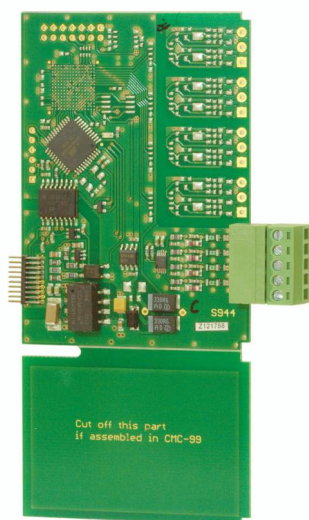


## Input modules - analogue flowmeters



FI2

- FI2: 2 analogue flowmeters + 2 current inputs
- FI4: 4 analogue flowmeters + 4 current inputs

The FI modules have been especially designed for the MultiCon units used in flow measurement applications. They allow user to display and record both actual flow(rate) and total flow(volume).

These modules have extra 2 or 4 analogue inputs for general purpose use. Each flowchannel is equipped with IN[n] input and common ground GND. All inputs are galvanically separated from the device, however have common ground. The user can, thanks to Scaling parameter in Logical channel, interpret measured current by the device at its discretion, which allows to cooperate with any kind of analogue output sensors. The general purpose use current inputs have common ground and they are isolated from the supply voltage and other modules.

Analogue flowmeter parameters are:

- Name - read-only input name given by the device,
- Unit - read-only field which displays measurement unit,
- Base unit - defines unit which is used by the totalizer (for example when flow measurement unit is m<sup>3</sup>/s, the base unit is „m<sup>3</sup>“),
- Mode - defines current range of selected input (0÷20mA, 4÷20mA) and the time base which is used during the measurement,
- Low limit - value which determines measured current, below which in logical channel „Lo“ state will be displayed,
- High limit - value which determines measured current, above which in logical channel „Hi“ state will be displayed,
- Balance - submenu which contains totalizer settings

Reset now - manual reset of the totalizer,

Reset mode - turns on and off reset from logical channel,

Reset source - allows to choose a logical channel from the list, which will reset the totalizer, when value in this channel will be greater than 0,

Strobe mode - turns on and off balance calculating from logical channel,

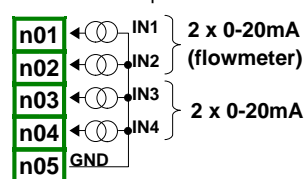
Strobe source - allows to choose logical channel from the list, which will hold balance calculating in totalizer,

Counting direction - turns on and off change of the counting direction,

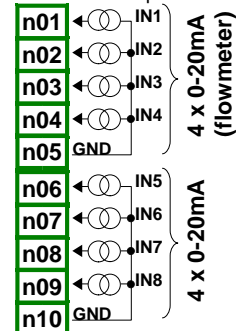
Direction source - allows to choose a logical channel from the list, which will change the counting direction.

## MODULE PIN ASSIGNMENT

FI2  
2 flowmeter inputs  
+ 2 current inputs



FI4  
4 flowmeter inputs  
+ 4 current inputs



## TECHNICAL DATA

|                     | FI2  | FI4  |
|---------------------|--|--|
| Number of inputs    | 2 x analogue flowmeter + 2 x current   | 4 x analogue flowmeter + 4 x current   |
| Measurement range   | flow input modes: 0 ÷ 20 mA, 4 ÷ 20 mA<br>flow input units: 1/sec, 1/min, 1/h<br>current input: 0 ÷ 20 mA, 4 ÷ 20 mA | flow input modes: 0 ÷ 20 mA, 4 ÷ 20 mA<br>flow input units: 1/sec, 1/min, 1/h<br>current input: 0 ÷ 20 mA, 4 ÷ 20 mA |
| Hardware limitation | current: 0 mA ÷ 24 mA  | current: 0 mA ÷ 24 mA  |
| Hardware resolution | current: 1 µA  | current: 1 µA  |
| Precision           | 0.1% @ 25°C  | 0.1% @ 25°C  |
| Internal impedance  | current: typ. 100  | current: typ. 100  |
| Protection          | current: 50 mA, auto-reset fuse  | current: 50 mA, auto-reset fuse  |
| Sampling period     | 50 ms *  | 50 ms *  |
| Weight              | 28 g   | 33 g   |
| Part number         | M99-FI2-001  | M99-FI4-001  |

\* CMC reads result every 100 ms